



MY13 C-Class Coupe Dealer Ordering Guide

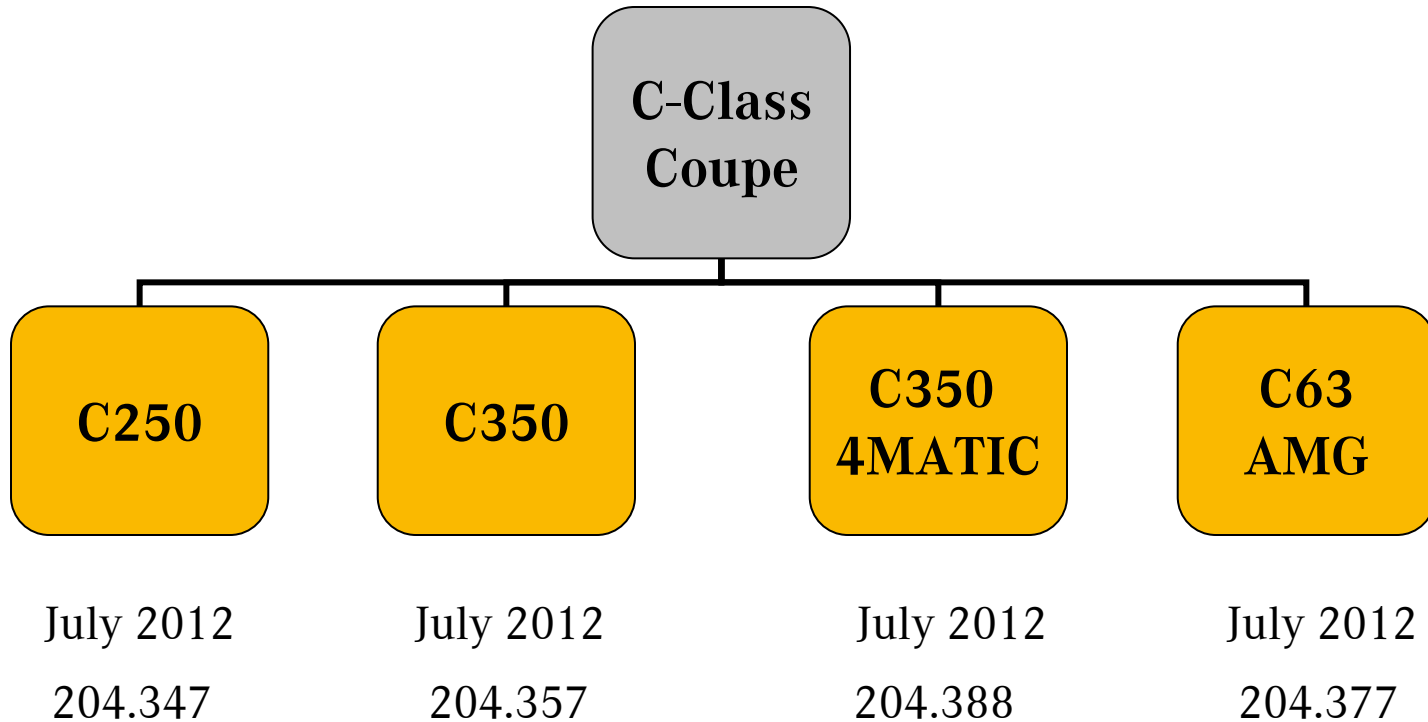
Product Management

Release Date: March 27, 2012

Note: Ordering details and pricing are subject to change



MY13 C-Class Coupe (C204) Portfolio





New for MY13 C-Class Coupe Highlights

New Feature: Engine ECO Start/Stop with Technology (C350/C350 4MATIC)



New Feature: DISTRONIC PLUS with PRE-SAFE® Brake
(offered in Driver Assistance Package, est. MSRP: \$2,990)





New for MY13 C-Class Highlight: Sport Package (Code 956)

Available on C350 Coupe / C350 4MATIC Coupe

Exterior:

- new 18" 7-double spoke AMG wheel, black/polished (Code 760)
- AMG rear spoiler in vehicle color

Interior:

- Sport seats (from C63 AMG Coupe) in MB TEX/DINAMICA with red stitching (black only)
- door panel, center console and gear lever with red contrast stitching
- sports steering wheel with red contrast stitching and silver shift paddles
- red seat belts (black seat belts available as no-cost option)
- black floor mats with red leather piping





New for MY13 C250 Coupe Highlight: Sport Package PLUS (P84)

Available on C250 Coupe

Exterior:

- new 18" 7-double spoke AMG wheel, black/polished (Code 760)
- AMG rear spoiler in vehicle color
- 'SPORT' badge on the front fenders

Interior:

- Sport seats (from C63 AMG Coupe) in MB TEX/DINAMICA with red stitching (black only)
- door panel, center console and gear lever with red contrast stitching
- sports steering wheel with red contrast stitching and silver shift paddles
- red seat belts (black seat belts available as no-cost option)
- black floor mats with red leather piping

Technical Enhancements:

- AMG sport suspension
- sport speed-sensitive steering with more direct ratio
- larger braking system (FA: 344x32/RA: 300x22)
- special sport exhaust system with sportier engine sound
- sport shift mode w/ rev matching



Mercedes-Benz

New for MY13 C250 Coupe Highlight: Sport Package PLUS (P84)





MY13 C-Class Coupe Engine Highlights

- 3.5L V6 for C350 RWD **incl. ECO Start/Stop Technology**



- 302 hp / 273 lb-ft

- 7G-TRONIC PLUS 7-Speed Automatic

- 3.5L V6 for C350 4MATIC **incl. ECO Start/Stop Technology**



- 302 hp / 273 lb-ft

- 7G-TRONIC PLUS 7-Speed Automatic



MY2013 C-Class Coupe Paint Palette Changes

Code	Name	Type	MSRP	Change
149	Polar White	Non-metallic	No Charge	New
988	Diamond Silver	Metallic	\$720	New
Phased Out / Removed From Coupe Palette				
650	Arctic White	Non-metallic	No Charge	Deleted
497	Cuprite Brown	Metallic	\$720	Deleted



MY13 C-Class Coupe (C204) Paint

040 - Black



183 - Magnetite Black Metallic*



497 - Cuprite Brown Metallic*



590 - Mars Red



149 - Polar White



755 - Steel Grey Metallic*



775 - Iridium Silver Metallic*



792 - Palladium Silver Metallic*



799 - Diamond White Metallic**



890 - Lunar Blue Metallic*



988 - Diamond Silver



* Metallic Paint additional charge of \$720

**Diamond White Metallic additional charge of \$795 plus metallic paint charge



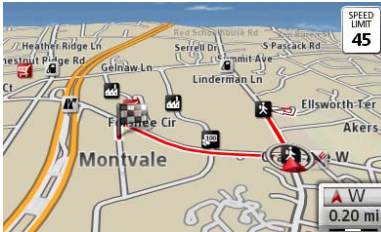
Becker® Map Pilot (incl. pre-wiring): Code 001, MSRP \$800



- Includes factory option Code 508
- Applicable MY13 models (without COMAND)
 - C- Class Sedan and Coupe
 - GLK-Class
 - SLK-Class
- Key features
 - Voice recognition-based “one shot” destination input
 - 45 days fresh map guarantee (after 1st time registration)
 - Optional 2D / 3D map view, including 3D landmarks, 3D city and 3D terrain model, Reality View on motorways (realistic view of junctions)
 - Display and announcement of speed limits on many roads
 - Brand logos as indication of points of interest, e.g. gas station
 - Information on distance remaining, time of arrival and street names
 - Navigation also shown in instrument cluster



Pre-Wiring for Becker® Map Pilot: Code 508, MSRP \$200



- Available only as factory option code
➔ cannot be retrofitted at the VPC / MY!
- Available for MY13 – entry radio (Audio 20)
- required for Becker Map Pilot
- Becker Map Pilot can be “installed” (plug and play) at dealership Applicable models:
 - C-Class Sedan
 - C-Class Coupe
 - SLK-Class
 - GLK-Class



MY13 C-Class Coupe Upholstery

121 - Black MB-Tex

221 - Black Leather*



125 - Almond / Mocha MB-Tex

Image TBD

235 - Sahara Beige Leather*



128 - Ash MB-Tex

228 - Ash Leather*



237 - Red Leather*



*Leather (221, 228, 235, 237) has an additional charge of \$1,750; selecting leather also adds power/memory passenger seat



MY13 C-Class Coupe Upholstery – C63 Only

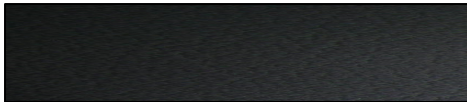
Standard

731 – Black MB-Tex/DINAMICA

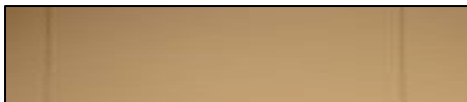


Optional Single Tone Leather

290pkg* – Black



181pkg* – Sand



292pkg* – Porcelain

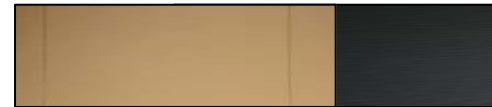


276pkg* – Classic Red



Optional Two Tone Leather

242pkg* – Sand/Black



244pkg* – Classic Red/Black



241pkg* – Porcelain/Black



*Packages include power/memory passenger seat, and black headliner - \$2,590



MY13 C-Class Coupe Trim

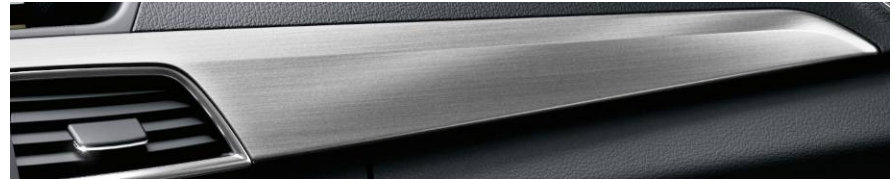
731 – Burl Walnut Wood Trim

Standard on C350
No cost option on C63



739 – Aluminum Trim

Standard on C250/C63
No cost option on C350



H06 – Ash Olive Matte Wood Trim

Available on C250
No cost option on C350/C63

Image TBD

H73 – Carbon Fiber Trim

Available on C63 AMG
Additional Charge – \$2,590



Black wood not available



MY13 C-Class Coupe Optional Packages (1 of 3)

P01pkg – Premium 1 Package

C250: \$1,995

C350/C63 AMG: Standard

049/518 – iPod/ MP3 Media Interface

536 – SIRIUS Satellite Radio

810 – harman/kardon surround system*

873 – Heated Front Seats

318pkg – Full Leather Seating Package

C250/C350: \$1,750

2xx – Full Leather Seating

242 – Power/Memory Front Passenger Seat

P64 – Memory Package

319pkg – Lighting Package

C250/C350/C63 AMG: \$1,290

600 – Headlamp Washing System

608 – Adaptive Highbeam Assist

615 – Bi-Xenon Head Lamps w/ Active Curve Illumination

518pkg – iPod/MP3 Media Interface Package**

C250: \$310

C350/C63: Standard (included in P01pkg)

518 – iPod/MP3 Media Interface

049vgc – iPod/MP3 Media Interface Cable

993pkg – Lane Tracking Package***

C250/C350/C63 AMG: \$850

234 – Blind Spot Assist

476 – Lane Keeping Assist

*Includes Dolby Digital 5.1 when ordered in combination with Multimedia Package

** Not available with P01 Premium 1 Package

*** Lane Tracking Package requires 320 Multimedia Package



MY13 C-Class Coupe Optional Packages (2 of 3)

320pkg – Multimedia Package*

C250/C350/C63 AMG: \$2,790

- 218 – Rearview Camera
- 396 – Voice Control
- 512 – COMAND System w/ Hard Drive Navigation
 - 3D Map Views
 - 7" High Resolution LCD Color Display
 - Gracenote album information including album cover art
 - In-dash 6-dvd/cd Changer & SD Card Slot
 - 10GB Music Register
 - SIRIUS Traffic Service

P31pkg – AMG Development Package

C63 AMG: \$6,050

- U47 – Carbon Fiber Trunklid Spoiler
- U70 – Red Brake Calipers
- 251 – Top Speed Raised to 174mph
- 923 – Increased output (+30hp)

*Requires P01 package or SIRIUS stand alone option



MY13 C-Class Sedan Optional Packages (3 of 3)

Code 956 – Sports Package

C350 Coupe / C350 4MATIC Coupe \$2,500 USD

Exterior:

- new 18" 7-double spoke AMG wheel, black/polished (Code 760)
- AMG rear spoiler in vehicle color

Interior:

- Sport seats (from C63 AMG Coupe) in MB TEX/DINAMICA with red stitching (black upholstery only)
- door panel, center console and gear lever with red contrast stitching
- sports steering wheel with red contrast stitching and silver shift paddles
- red seat belts (black seat belts available as no-cost option)
- black floor mats with red leather piping

Code 956 + P84 – Sport Package PLUS

C250 Coupe exclusive (not available on any other models) \$3,000 USD

- All components in Sports Package included
- 'SPORT' badge on the front fenders

Additional Technical Enhancements:

- AMG sport suspension
- sport speed-sensitive steering with more direct ratio
- larger braking system (FA:344x32/RA:300x22)
- special sport exhaust system with sportier engine sound
- sport shift mode w/ rev matching



MY13 C-Class Coupe Stand-Alone Options

	C250	C350	C63AMG
230 - PARKTRONIC w/ Parking Guidance	\$970	\$970	\$970
471 - Limited Slip Differential	N/A	N/A	\$2,030
536 - SiriusXM Satellite Radio	\$460	Standard	Standard
731 - Burl Walnut Wood Trim	\$325	Standard	n/c
782 - 18" AMG 7-Spoke Alloy Wheel	\$1,040	\$1,040	N/A
786 - 18" AMG 5-Twin Spoke Alloy Wheel	\$1,040	\$1,040	N/A
790 - 18" AMG 5-Spoke Alloy Wheel	N/A	N/A	n/c
873 - Heated Front Seats	\$750	Standard	Standard
889 - KEYLESS GO	\$650	\$650	\$650
H06 - Ash Olive Matte Wood Trim	\$325	n/c	n/c
H73 - Carbon Fiber Trim	N/A	N/A	\$2,590

Power rear sunshade not available on coupe



MY13 C-Class Coupe VPC Accessories

	C250	C350	C63AMG
001 - Becker Map Pilot ¹	\$800	\$800	\$800
067 - Illuminated Door Sills	\$700	\$700	N/A
068 - Wheel Locks	\$140	\$140	\$140
070 - Chrome Door Handle Inserts	\$90	\$90	\$90
104 - Rear Trunk Lid Spoiler	\$300	\$300	N/A
105 - Roof Spoiler ²	\$300	\$300	N/A
120 - AMG Illuminated Door Sills	N/A	N/A	\$850

*VPC installed options use “vgc” suffix. i.e., code 067vgc.

1. Not available with (320) Multimedia Package
2. Only available with (104) Rear Spoiler



MY13 C-Class Coupe SPC Options

Note: All prices estimated

	C250	C350	C63AMG
197 - Obsidian Black Metallic Paint	\$720	\$720	\$720
			
315- Dynamic Handling Package ¹	\$1,400	\$1,400	N/A
510 - In-Dash 6-Disc CD Changer	\$480	\$480	\$480

*SPC options carry and additional \$250 charge.

1. Dynamic Handling Package includes (786) 18" AMG twin 5 spoke wheel, advanced agility suspension, speed sensitive steering



Mercedes-Benz

MY13 C-Class Coupe Headlights



Halogen (Standard)



Bi-Xenon (319pkg Lighting Package)



MY13 C-Class Coupe Wheels

1.



2.



3.



4.



5.



6.



1. C250 Standard 17 in. (639)
2. C350 17 in. AMG (784)
3. C250/350 Sport Optional 18 in. AMG (782)
4. C250/350 Sport Optional 18 in. AMG(786)
5. C63 AMG Standard 18 in. AMG (795)
6. C63 AMG Optional 18 in. AMG (790)



Mercedes-Benz

MY13 C-Class Coupe Steering Wheels



C250/350



C63 AMG



C63 AMG w/
AMG Development Package

Note: Almond/Beige interior will not include flat bottom steering wheel. Wheel will be replaced with a round three spoke steering wheel

C250/350

- 590 – Mars Red
- 782 – Optional 18” 7-Spoke AMG Wheel
- 319pkg – Lighting Package



Note European image shown

C350

- 792 – Palladium Silver Metallic
- 786 – Optional 18” twin 5-Spoke AMG Wheel
- 319pkg – Lighting Package
- 230 – PARKTRONIC with Parking Guidance



Note European image shown

C63 AMG

- 799 – Diamond White Metallic
- 795 – Standard 18” twin 5-Spoke AMG Wheel
- 319pkg – Lighting Package
- 230 – PARKTRONIC with Parking Guidance



Note European image shown

- 237 - Red Leather
- 739 - Aluminum Trim
- 320pkg - Multimedia Package
- 993pkg - Lane Tracking Package
- P01pkg - Premium 1 Package

*Note that this is a European image and U.S. vehicle will not feature ECO button in center console or center blind over cup holders



- 221 - Black Leather
- 739 - Aluminum Trim



*Note that this is a European image and U.S. vehicle will not feature center blind over cup holders

AMG Interior

- 244pkg - Classic Red/Black Leather Interior
- 320 pkg - Multimedia Package
- H73 - Carbon Fiber Trim

*Note that this is a European image and U.S. vehicle will not feature center blind over cup holders

AMG Interior

- 241pkg - Porcelain/Black Leather Interior
- H73 - Carbon Fiber Trim



*Note that this is a European image and U.S. vehicle will not feature center blind over cup holders





Mercedes-Benz

